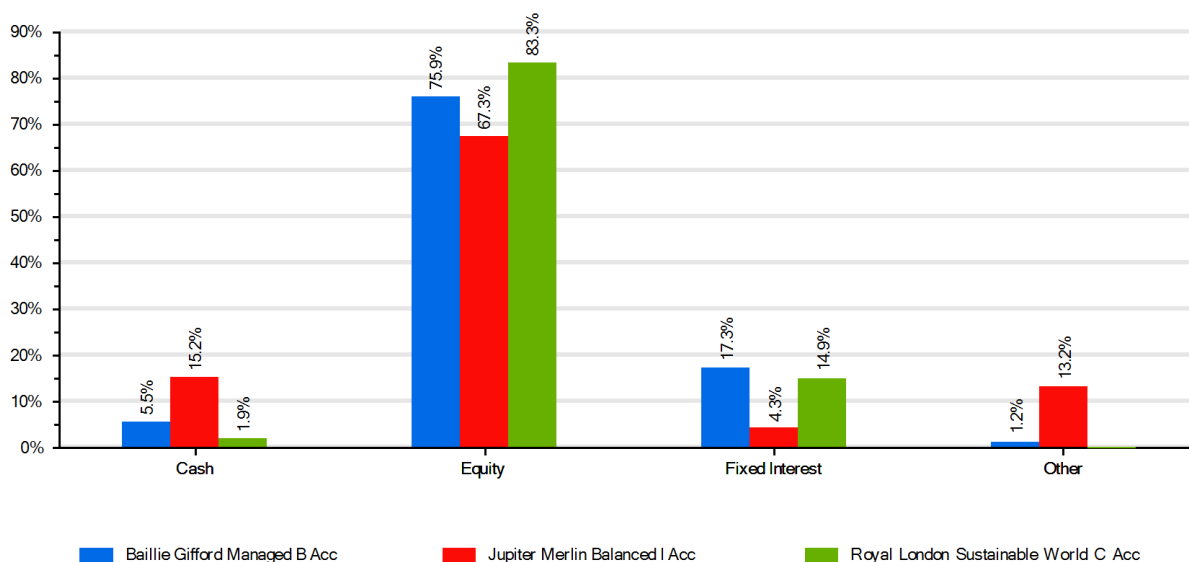


Comparison

Key Facts Comparison

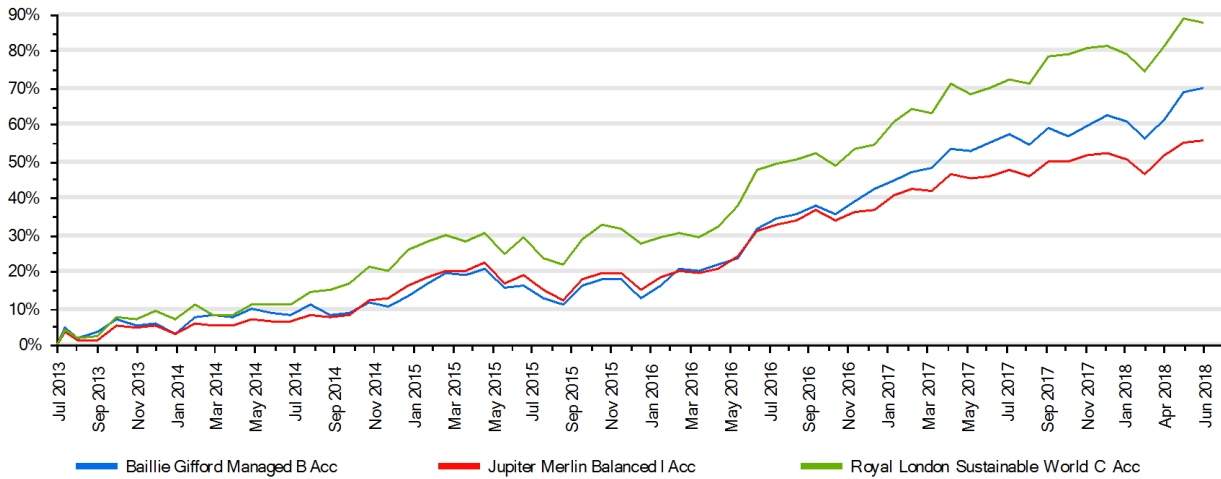
| | Baillie Gifford Managed B Acc | Jupiter Merlin Balanced I Acc | Royal London Sustainable World C Acc |
|-------------------------|---------------------------------|---------------------------------|--------------------------------------|
| ISIN | GB0006010168 | GB00B4351D99 | GB00B882H241 |
| Trading Symbol | n/a | n/a | n/a |
| ABI Pension Sector | n/a | n/a | n/a |
| ABI Life Sector | n/a | n/a | n/a |
| IMA Sector | Mixed Investment 40-85% Shares | Mixed Investment 40-85% Shares | Mixed Investment 40-85% Shares |
| Equity Sector | n/a | n/a | n/a |
| AIC Sector | n/a | n/a | n/a |
| Equity Industry | n/a | n/a | n/a |
| Benchmark | IA Mixed Invest 40 - 85% Shares | IA Mixed Invest 40 - 85% Shares | Mixed Investment 40%-85% shares |
| Share Type | Growth | Growth | Growth |
| 12 Month Dividend Yield | 1.41% | 2.06% | 1% |
| Initial Charge | 0% | 5.3% | 0% |
| AMC | 0.40% | 0.75% | 0.75% |
| TER | 0.43% | 1.70% | 0.77% |
| Latest Bid Price | n/a | n/a | n/a |
| Latest Close Price | n/a | n/a | n/a |
| Latest NAV Price | £10.92 at 25/07/2018 | £2.0014 at 25/07/2018 | £2.172 at 25/07/2018 |
| Fund Size | £3.5bn at 30/06/2018 | £1.7bn at 30/06/2018 | £469m at 30/06/2018 |
| Launch Date | 01/04/1987 | 19/09/2011 | 26/11/2012 |
| Indexing Approach | n/a | n/a | n/a |

Asset Allocation Comparison



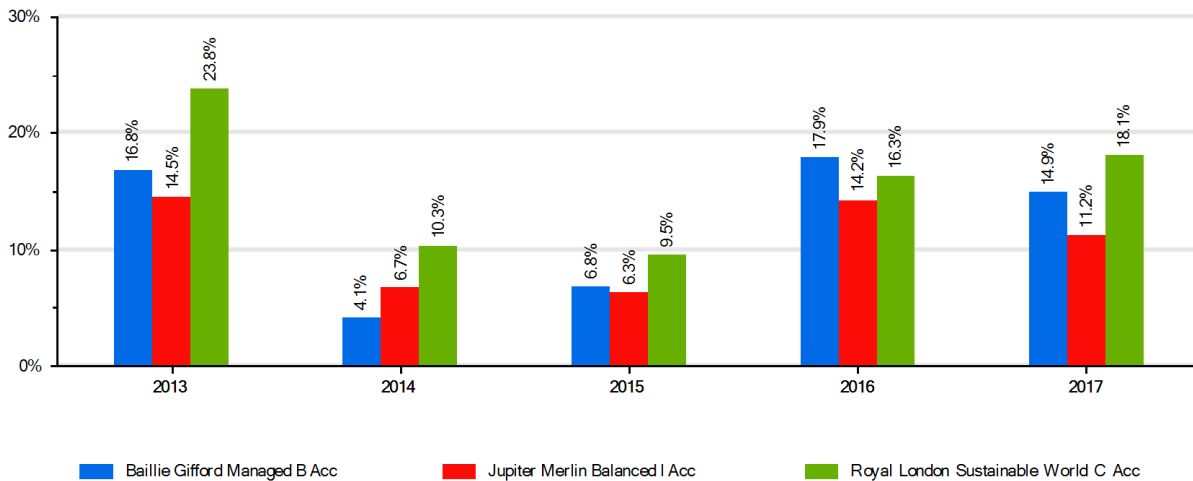
Comparison

Cumulative Returns Comparison



As At 30/06/2018. © O&M Systems
Past performance is no guarantee of future performance, and the value and income derived from investments can go down as well as up.

Discrete Returns Comparison



© O&M Systems
Past performance is no guarantee of future performance, and the value and income derived from investments can go down as well as up.

Equity Sectors Comparison

| | | Baillie Gifford Managed B Acc | Jupiter Merlin Balanced I Acc | Royal London Sustainable World C Acc |
|--|------------------------|-------------------------------|-------------------------------|--------------------------------------|
| | Cyclical | | | |
| | Basic Materials | 7.70% | 4.74% | 7.70% |
| | Consumer Cyclical | 17.29% | 17.44% | 17.50% |
| | Financial Services | 22.10% | 18.66% | 8.58% |
| | Real Estate | 0.98% | 0.72% | 1.36% |
| | Sensitive | | | |
| | Communication Services | 0.92% | 2.59% | 0.00% |
| | Energy | 2.45% | 2.80% | 0.00% |
| | Industrial | 13.58% | 12.72% | 15.99% |
| | Technology | 16.82% | 14.56% | 24.03% |

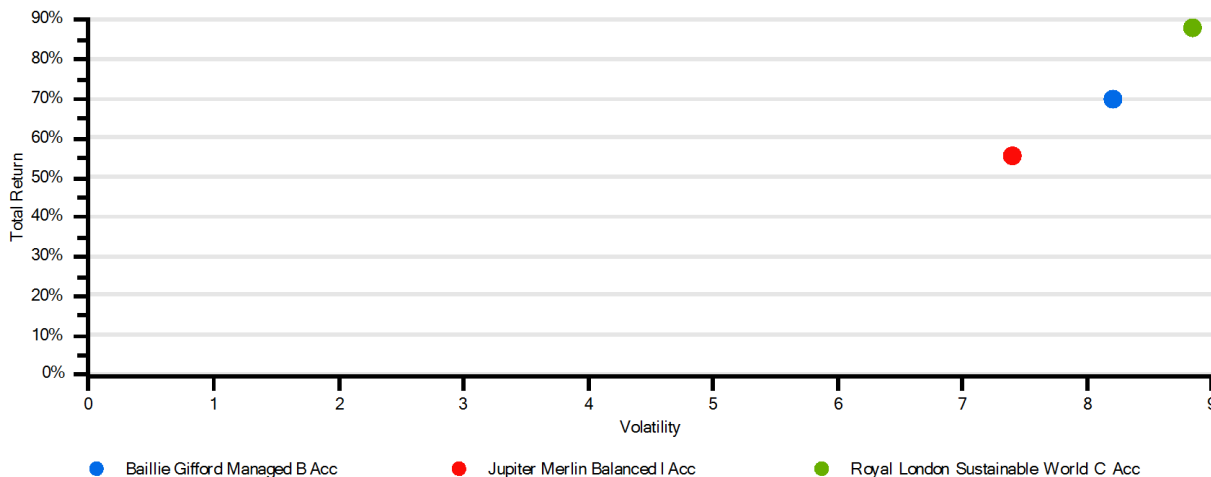
Comparison

| Defensive | Consumer Defensive | Healthcare | Utilities | As At 30/04/2018 | As At 31/03/2018 | As At 31/05/2018 |
|-----------|--------------------|------------|-----------|------------------|------------------|------------------|
| → | 8.21% | 9.67% | 0.29% | | 13.00% | 11.01% |
| | | | | | 11.59% | 13.84% |
| | | | | | 1.18% | 0.00% |

Fixed Income Comparison

| | Baillie Gifford Managed B Acc | Jupiter Merlin Balanced I Acc | Royal London Sustainable World C Acc |
|-----------------------------------|-------------------------------|-------------------------------|--------------------------------------|
| Credit Quality Breakdown | | | |
| AAA | n/a | n/a | n/a |
| AA | n/a | n/a | n/a |
| A | n/a | n/a | n/a |
| BBB | n/a | n/a | n/a |
| BB | n/a | n/a | n/a |
| B | n/a | n/a | n/a |
| Junk | n/a | n/a | n/a |
| Not Rated | n/a | n/a | n/a |
| Fixed Income Style | 30/04/2018 | 31/03/2018 | 31/05/2018 |
| Number Of Bond Holdings | 127 | 0 | 246 |
| Average Effective Maturity | 0 Yrs | 0 Yrs | 0 Yrs |
| Average Effective Duration | 0 | 4.93 | 0 |
| Average Coupon | 4.66% | 5.22% | 4.71% |

Risk Reward Comparison



As At 30/06/2018. © O&M Systems
Past performance is no guarantee of future performance, and the value and income derived from investments can go down as well as up.